



GO HAWKS!

Prairie Central CUSD #8

Westview Elementary School

600 S. First Street

Fairbury, IL 61739

815-692-2623

August/September 2012

Dear Westview Families,

Welcome to a new year at Westview School. Everyone is excited for the returning students and to welcome those students who are new to Westview.

This year at Westview Elementary, we have three new staff members in our building. We have Emily Jones in 1st Grade. Kim Walk will teach half day PreK and half day Kindergarten. Erin Bundy will also serve Westview as one of our RTI Specialist. We welcome them to our Westview family.

As the new year begins, please remember to read the newsletter. It will have a similar format each month and will be sent home with your student. You may also find an electronic copy of the newsletter on our school website:

www.prairiecentral.org/westview

I am excited for a great year,

Brian Quam
Westview Principal

DATE	ACTIVITY
Wed. Aug. 22	First Day of School K-4 1:06 Dismissal
Thurs. Aug. 23	First Day of ESCE and PreK
Aug. 23-31	School Dismisses at 2:06
Aug. 30	Market Day Orders are due by 11 am
Sept. 3	No School
Sept. 4	Begin Regular School Hours
Sept. 4	Market Day Pick up 4:30 pm to 5:15 pm
Sept. 6	PTO Meeting at Westview 6:30 to 7:30 pm
Sept. 13	PTO Picnic at the North Park
Sept. 14	Homecoming Dismissal at 1:36
Sept. 20	Prairie Central Board of Education Meeting 7pm at the Unit Office
Sept. 26	School Improvement Day- Dismissal at 1:00 pm

*Welcome Back
For an Exciting
School Year*



If your child arrives late to school, you must sign your child in at the office. Students are not permitted to sign themselves in.

*Please remember to read and review your Student Handbook!
Students who are unable to attend school need to be reported by 8:30 am*

**PTO Meetings for 2012-2013
Will be held on
the following dates:**



September 6, 2012
October 4, 2012
November 1, 2012
December 6, 2012
February 7, 2012
March 7, 2012
April 4, 2012
May 2, 2012

Child care is provided!

**Congratulations to our PTO Officers for
2012-2013**

Karen Fehr-President
Rendi Cottrell- Vice President
April Barnes- Secretary
Beth Marshall – Treasurer

Market Day

Anyone can order so tell your neighbors and friends!

NEXT Order PICK UP Day:

Sept. 4, 4:30 – 5:15 PM

Orders for this delivery date are due:

August 30th by 11 am

Future Delivery Dates:

October 2, 2012

November 9, 2012

December 4, 2012

Market Day is a fundraiser sponsored by our PTO.

Order forms are available in the school office or you can order on-line at: www.marketday.com
Please use the school account # 9851.

Proceeds from Market Day are used to enhance the learning environment of our school. This includes sponsoring field trips and assemblies.

Absences:

Please call the school office by 8:30 am if your child will be out of school. Please provide the reason your child is not at school.

If you do not call the school, the law requires us to make 3 attempts to try to contact you and to ask the reason for the absence.

If we do not reach you or a reason is not provided, it will be marked as an unexcused absence.

After 4 unexcused absences or 10% of any type of absence, we are required to mail a letter to you about truancy.

After 8 unexcused absences, we are required to make a referral to the truancy officer.

**Breakfast and Lunch Fees
for 2012-2013**

Breakfast	\$1.70
Student Lunch	\$2.25
Adult Lunch	\$3.75
Milk	\$0.40
Peanut Butter Sandwich	\$0.75

If you would like to join your student for lunch, please call the office before 9:00 am so that we can add you to the meal count.

A convenient way to keep track and pay for your child's lunch is through:

www.MealpayPlus.com

There is no cost for this service. You can check your child's lunch account online, monitor lunchroom purchases and receive e-mail notices when your account is low. For an additional fee, you can make payments to your student's account and/or set up an auto-pay.

For your students ID number to register, please contact the school office at 692-2623.

Immunizations
and
Physical Forms

are due by
October 15, 2012



for all kindergarten students
and students who are entering school
for the first time.



REMINDERS:

- All classroom treats must be store bought due to health risks. Students may bring homemade treats to school for their lunch but they are not to be shared.
- Student's requesting a change of transportation needs to make arrangements with Pam Weeks (Director of Transportation) at 815-692-3484 and/or Lora Freeland at 815-692-2623 prior to 2 pm.
- Shoes need to be worn at all times. Students are strongly discouraged to wear flip flops or backless sandals. Depending on PE or recess activities, students may be asked not to participate.
-



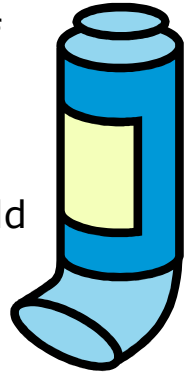
Medication at School

In order for a student to take medication at school, we must have a Medication Authorization Form signed by the parent AND doctor.

If a student must take medication while at school, an ADULT must bring the medication to the school office WITH the signed Medication Authorization form.

It is a violation of school policy for a student to carry prescription or non-prescription medication to school. This includes over the counter medication such as throat lozenges and cough drops. A violation of this policy may result in suspension from school.

Students who require an inhaler or Epi-Pen may be permitted to carry these items at school. Please see the school nurse if your child uses either medication distribution tool or if have questions about this policy. A Medication Authorization Form is also required for inhalers and Epi-Pens.



Help Keep Kids Healthy!

Please remind children to wash their hands frequently-

- Before eating
- After using the toilet
- After sneezing
- After coughing
- After wiping their nose
- After playing outside
- When hands are visibly dirty

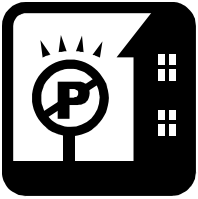


Health Reminder

Children with a fever of 100 degrees or higher are not allowed at school.

Children must be **free of fever** for 24 hours, *without* a fever reducing medication, before they can come back to school.

Please do not give your child a fever reducing medication and send them to school. This spreads illness to others.



Morning Drop Off

Students may enter the building after 7:15 am. Morning supervision begins at 7:15. Please do not drop students off before 7:15 am.

The circle drive is a drop off zone. For the safety of pedestrians, please do not drive on the sidewalk. If you wish to walk a student into the building, please park in a parking space. Do not park in the circle drive.

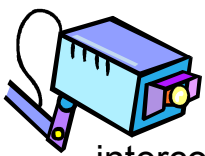
Handicapped spaces are for vehicles authorized to use a handicapped space. Please do not block these spaces.

Vehicles should only be in the circle drive long enough to let passengers get out. When possible, passengers should exit the right side of the vehicle.

Try to say your good-byes before getting to the drop off point so passengers can exit the vehicle without delay. If someone is taking more time than usual to drop off, please be patient. We are all working with young children and “things happen” that cause delays.

Impatient drivers who pull out of line and drive around others only cause a danger to students and pedestrians in the parking lot. If you are an impatient person, please allow yourself more time so that you do not have to hurry through the parking lot at drop off time.

Safety is our first priority.



Security at Westview - Westview is a secure building. All visitors should enter through the front doors. To enter, visitors will need to stand in front of the camera and ring the doorbell. Office staff will answer through an intercom stating, “Welcome to Westview. May I help you?” Visitors should identify who they are and why they wish to enter. The door will then be released for the person to enter. Once in the building, visitors should come to the office, sign in and wear a visitor’s badge throughout their stay.

Reminder:

It is *illegal* to talk on a cell phone in a school zone.



A Day in the Life of Westview...

7:15 am – The first bus arrives – morning supervision begins in the gym.
At this time, parents may choose to drop off students.
Students report to different areas of the building based upon grade level:

ECSE, PreK, and Kindergarten = Art Room
1st, 2nd, and 3rd graders = Gym
4th graders = Library

Students in 1st – 4th grade are expected to bring a book for silent reading during morning supervision. Younger students have games, songs and learning activities to keep them busy.

7:25 – 7:50 am – Breakfast is served. Students who arrive by bus are served breakfast as they arrive. Students who arrive by car must arrive by 7:45 am to eat breakfast.

7:55 am – First Bell - Students are dismissed from the gym, art room, and library to their classrooms.

8:00 am – **Instruction begins in the classroom.**

8:06 am – Second Bell - Morning announcements are read. Any student not in the classroom at this time is marked tardy.

Lunch times:

11:15 – 1st grade
11:30 – 3rd grade

11:45 – 2nd grade
12:00 – 4th grade
12:15 – Kindergarten

3:06 pm – Dismissal. Busses load, car lane dismissal begins.

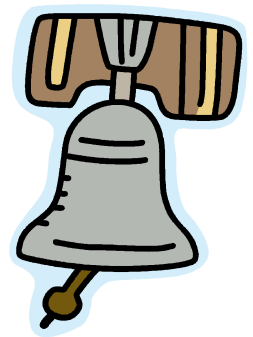
3:12 pm – Busses leave.

3:15 pm – Students who walk/bike home are released when the car line is gone.

~~~~~

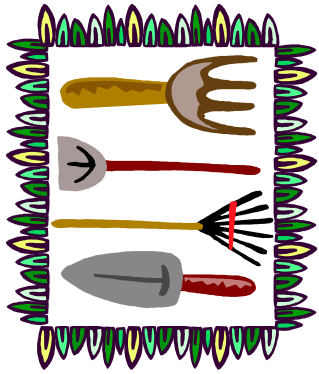
## **Bell Schedule for Westview School**

7:55 – Students go to classrooms  
8:00 – Instruction BEGINS  
8:06 – Students are late  
3:06 – End of day dismissal



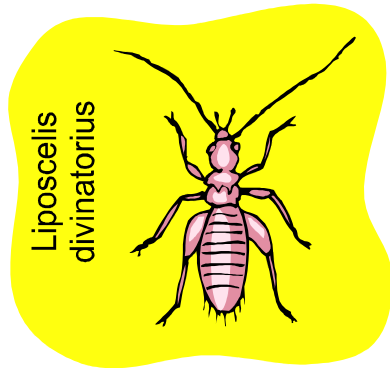
At 8:06, students who are NOT in the classroom are late and are marked tardy.  
Please help your child to be on time for school!

~~~~~



Thank you to retired teacher, Karen Harms, for taking care of the planting area in the circle drive and flag pole area!

Karen has spent many hours this summer planting, weeding, and watering the gardens.



Head Lice Season

We have already had a few cases of head lice this year. Please check your children on a regular basis. If you find nits or live lice, please treat your child.

A child with head lice will receive a 1 day excused absence. Additional days are considered unexcused.

Contact your family doctor or pharmacist if you have questions about the treatment process or recommended products.

Head lice are very common and are easily transferred to others. Please make sure your child does not share hair accessories, combs, brushes and hats with others.